

BusBoard-3U-CONN - with connectors



Prototype circuit board with common connector footprints.

Features

- *BusBoard-3U-CONN* speeds assembly by providing footprints for common connectors plus a switch.
 - DB-9 - modular telephone (2)
 - DB-25 - 1/8" sub-mini (2) or
 - BNC (2) modular handset (2)
 - coaxial power connector
 - SPDT switch
- The *BusBoard* zig-zag circuit pattern keeps opposite sides of an integrated circuit or connector on separate tracks to simplify wiring.
- Narrow and wide tracks identify connected pads. Indicator holes show wide tracks.
- DIP ICs and headers can be connected pin-to-pin without cutting traces or adding wires. It's ideal for memory buses and it provides easy power and grounds for other ICs.

- Opposite pins of a dual header can be on the same bus or different busses.
- Soldermask simplifies soldering and prevents solder bridges on tracks.
- Standard single height (3U) Eurocard/VME size. Many off the shelf enclosures and card cages are available.

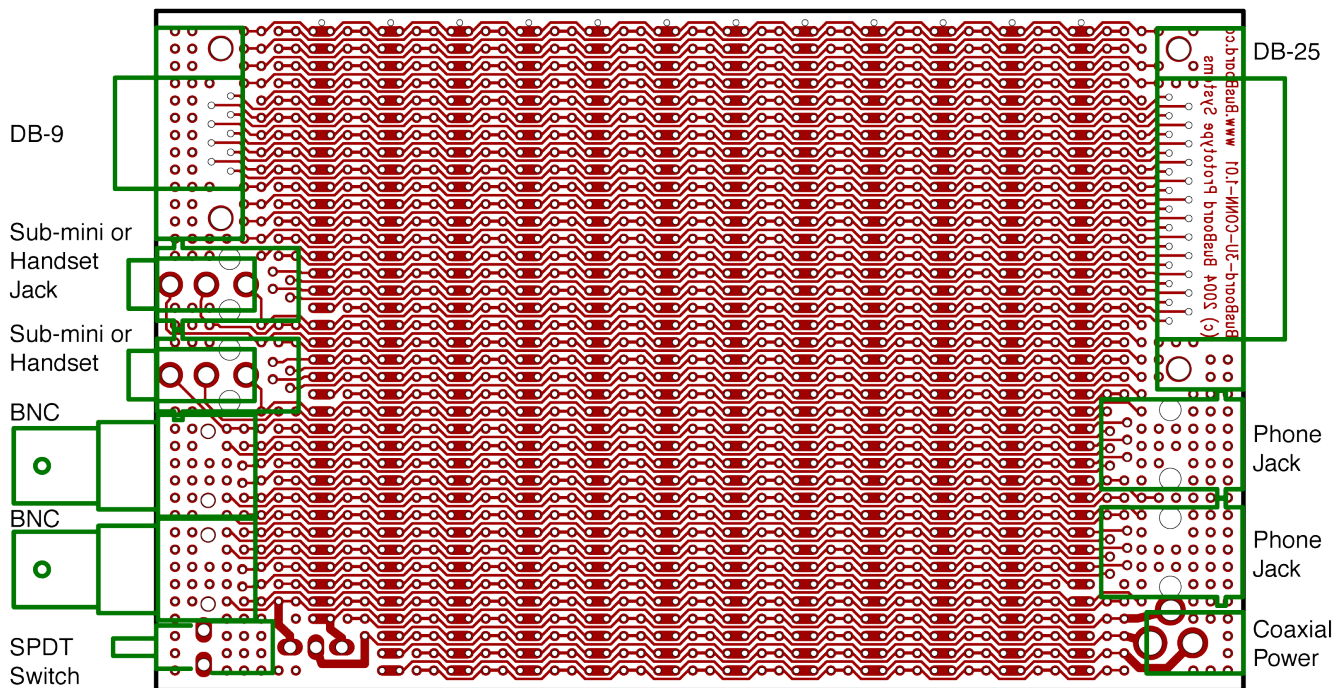
Specifications

- Etched FR4 glass-epoxy circuit board.
- Solder mask to prevent solder bridges.
- Single sided PCB, 1oz/ft² copper, tinned for easy soldering.
- Holes are drilled on 0.1" (2.54mm) centers.
- 0.037" (0.94mm) holes sized for ICs or square post headers.
- 76 separate BusBoard traces.
- 3.9" wide, 6.3" long, 1/16" thick (100 x 160 x 1.6mm).

Order Part# BB3UC

(PCB Rev. 1.01)

Board Layout With Connectors



Compatible Connectors

The following list provides suggestions for parts which can be used with BusBoard-3U-CONN. It is not an exhaustive list. In most cases, parts from many different manufacturers may be used.

Telephone Connectors

- Amp 520249-2 Modular Phone Handset Jack, Right Angle, 4 Positions, 4 Contacts.
- Amp 520257-2 Modular Phone Handset Jack, Vertical, 4 Positions, 4 Contacts.
- Amp 520250-3 Modular Phone Jack, Right Angle, 6 Positions, 6 Contacts.
- Amp 520258-3 Modular Phone Jack, Vertical, 6 Positions, 6 Contacts.

Note: ProtoBoard-3U-CONN has an 8-position mod. jack footprint but BusBoard-3U-CONN does not.

Barrel Coaxial Power Connectors

- Switchcraft RAPC722 Coaxial Barrel Power Connector, 2mm Center Pin.
- Switchcraft RAPC712 Coaxial Barrel Power Connector, 2.5mm Center Pin.

Sub-mini Connectors

- Switchcraft 35RAPC2AV 1/8" Sub-Mini Jack, Right Angle.

BNC Connectors

- Amp 227161-2 BNC Connector, Right Angle, Black Housing.
- Amp 227161-1 BNC Connector, Right Angle, White Housing.
- Molex 73137-5005 BNC Connector, Right Angle, Black Housing.
- Molex 73137-5015 BNC Connector, Right Angle, White Housing.

Right Angle DB Connectors

- Amp 748879-1 DB-9 Male Connector, Right Angle, PCB mount, 0.318 Style, Boardlocks, 4-40 Threaded Inserts.
- Amp 748875-1 DB-9 Female Connector, Right Angle, PCB mount, 0.318 Style, Boardlocks, 4-40 Threaded Inserts.
- Amp 748881-1 DB-25 Male Connector, Right Angle, PCB mount, 0.318 Style, Boardlocks, 4-40 Threaded Inserts.
- Amp 748877-1 DB-25 Female Connector, Right Angle, PCB mount, 0.318 Style, Boardlocks, 4-40 Threaded Inserts.

A DB-15 connector can be fitted on *BusBoard-3U-CONN* on the DB-25 footprint. If boardlocks are used, an additional mounting hole can be drilled.

- Amp 748880-2 DB-15 Male Connector, Right Angle, PCB mount, 0.318 Style, Boardlocks, 4-40 Threaded Inserts.
- Amp 748876-1 DB-15 Female Connector, Right Angle, PCB mount, 0.318 Style, Boardlocks, 4-40 Threaded Inserts.

Vertical DB Connectors

- Amp 745051-2 DB-9 Male Connector, Vertical, PCB mount, 0.318 Style, 4-40 Threaded Inserts.
- Amp 207841-4 DB-9 Female Connector, Vertical, PCB mount, 0.318 Style, 4-40 Threaded Inserts.
- Amp 745053-2 DB-25 Male Connector, Vertical, PCB mount, 0.318 Style, 4-40 Threaded Inserts.
- Amp 745058-4 DB-25 Female Connector, Vert, PCB mount, 0.318 Style, 4-40 Threaded Inserts.

SPDT Switches

- E-Switch 100-SP-1-T1-B1-M7-Q-E SPDT Switch, Right Angle, PCB Mount.
- NKK M2012SS2W30 SPDT Switch, Right Angle, PCB Mount.

BusBoard Prototype Systems - Built for designers
