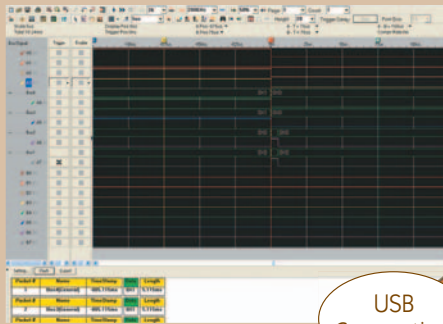


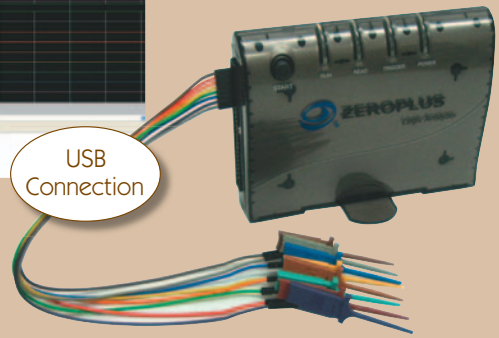
PC-BASED LOGIC ANALYZER

These PC-based Logic Analyzers have a patented waveform compression technology that can increase the effective memory capacity beyond the physical 4 Mbits. All 16 channels can achieve a compression rate up to 255X (depending on the data content), allowing you to obtain considerably more sampling data.

- 100 MHz synchronous operation on all channels
- 5 ns glitch capture capability
- Intuitive, easy-to-use Windows application
- Data can be processed or printed to CSV or TXT files
- Timing / State / Single-processor / Bus / Real-time instruction trace analysis
- Flexible signal trigger options (rising/falling/either edge; high, low)
- Binary / Decimal / Hex display formats
- Selectable trigger position (100% pre-trigger to 100% post-trigger)
- Channels can be default selected to 'Don't Care' for search or comparison purposes
- Software updates available from our website



New!



USB Connection

LAP-16064

- 100-100 MHz asynchronous operation (16 channels)
- 64Kb memory depth/channel

LAP-16128U

- 100-200 MHz asynchronous operation (16 channels)
- 256Kb memory depth/channel

PC BASED DIGITAL OSCILLOSCOPES

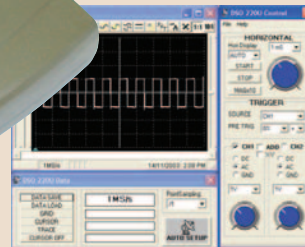
Compact Digital Storage Oscilloscopes (DSO) that interface with your PC. Simply plug the portable unit into the USB port in your PC or laptop and transform your computer into a fully functional dual trace DSO.

- 2 Channel
- Accuracy: +/-3%
- Resolution: 8 Bit
- Range: 10 Divisions
- Trigger Source: CH1, CH2, EXT
- USB 2.0 Connectivity
- Supports Windows2000/XP/Vista
- Probes sold separately
- Dimensions: 187 x 100 x 33mm
- One Year Warranty



USB Connection

New!



DSO-3250

- **Bandwidth: 100 MHz**
- Sampling Rate: 250 MS/s

DSO-3150

- **Bandwidth: 60 MHz**
- Sampling Rate: 150 MS/s

DSO-3100

- **Bandwidth: 40 MHz**
- Sampling Rate: 100 MS/s

ANALOG OSCILLOSCOPE

Laboratory grade two channel analog oscilloscopes, with two 10x / 1x Switchable Probes.



OS-2100

- **Bandwidth: 100 MHz**
- CRT Acceleration Voltage: 14KV
- Rise Time: 3.5ns
- Delayed Sweep

- 2 Channel
- Sweep Time: 0.1uS/Div -0.2s/Div +/-3%
- Sensitivity: 5mV – 5V/Div @ x1 mode +/- 3% & 1mV – 1V/Div @ x5 mode +/- 3%
- Maximum Input Voltage: 400V (DC+AC Peak)
- Power Requirements: 120VAC / 60Hz / 55W
- Trigger Source: CH1, CH2, EXT
- Dimensions: 368 x 152 x 438mm
- One Year Warranty



OS-2030

- **Bandwidth: 30 MHz**
- CRT Acceleration Voltage: 2.1KV
- Rise Time: 17.2ns