

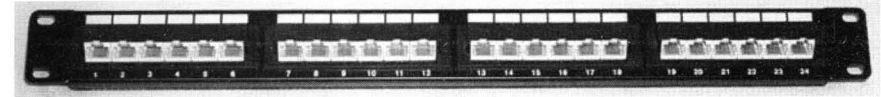
Unshielded Patch Panel Installing Instruction

PT PA series

1



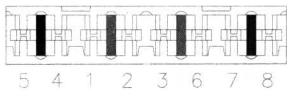
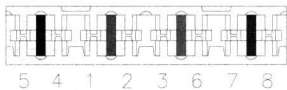
180° Angle Type (12, 16, 24, 32, 48, 72, 96port)



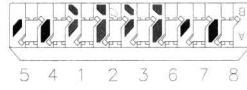
45° Angle Type (12, 16, 24, 32, 48, 72, 96port)

2

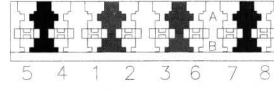
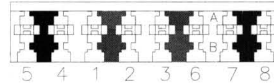
IDC (3 options)



110D Type



KEONE Type

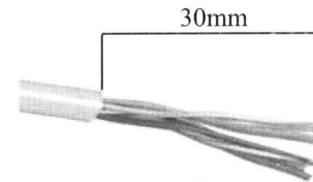


110D & KRONE IDC compatible.

Color Coding Information

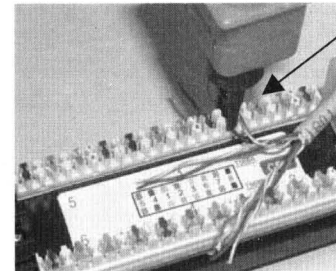
T568A		T568B	
Pin 5	White/Blue	Pin 5	White/Blue
Pin 4	Blue	Pin 4	Blue
Pin 1	White/Green	Pin 1	White/Orange
Pin 2	Green	Pin 2	Orange
Pin 3	White/Orange	Pin 3	White/Green
Pin 6	Orange	Pin 6	Green
Pin 7	White/Brown	Pin 7	White/Brown
Pin 8	Brown	Pin 8	Brown

3



Strip approximately 30mm of the cable jacket, and separate to 4 pair each.

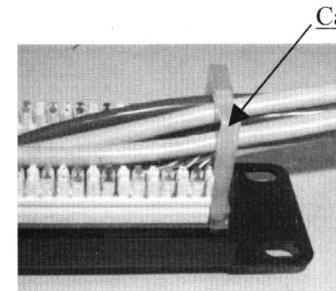
4



Cut outside

Follow the IDC color coding to position T568A or T568B wiring. Use the impact tool to crimp and connect the wires.

5



Cable Holder

Use the Cable-Holder to manage these cables, then complete the installation.