

# CIRCUIT-TEST

## RPT Series Power Adapters

- AC/DC Adapter - 19VDC 4.7A
- Energy Efficiency Level VI
- Universal Input (100 - 240 VAC)
- No Load Power Consumption <0.21W
- Over Voltage, Over Current and Short Circuit Protection
- UL, cUL Safety Approvals



### SPECIFICATIONS

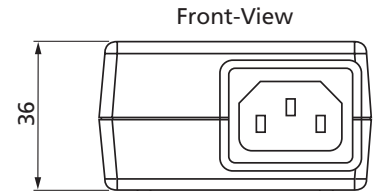
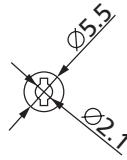
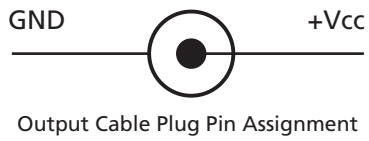
<b>MODEL</b>	<b>RPT90-19-P5-A3</b>
<b>INPUT</b>	
Voltage	100 - 240 VAC
Frequency	50 - 60Hz
Current	1.2A Max
Inrush Current	60A Max (at 230VAC, full load, cold start, 25°C)
Power Consumption (no load)	< 0.21W (at 115VAC/230VAC)
<b>OUTPUT</b>	
Voltage	19VDC
Current	4.7A Max
Regulation	±5% Typical
Power	90W Max
Ripple & Noise	190mVp-p Max
<b>PROTECTIONS</b>	
Over Voltage Protection	Vout 150% Max
Short Circuit Protection	Output shutdown, auto recovery
Over Current Protection	Iout 150% Max
<b>SAFETY</b>	
Safety Approvals	UL, cUL,
Efficiency	DoE LEVEL VI, NRCan
Dielectric Strength	Primary to Secondary at 10mA for 1 minute: 3000Vac
Insulation Resistance	Primary to Secondary 500Vdc: 10Mohm
EMI/EMC	FCC Class B
Leakage Current	Less than 3.5mA
MTBF	300,000 hours (calculated at 25°C per Telcordia SR-332)
RoHS	Compliant
<b>ENVIRONMENTAL</b>	
Operating Temperature	0 to 40°C
Storage Temperature	-20 to +80°C
Operating Humidity	20 to 80% RH
Storage Humidity	10 to 90% RH

# CIRCUIT-TEST

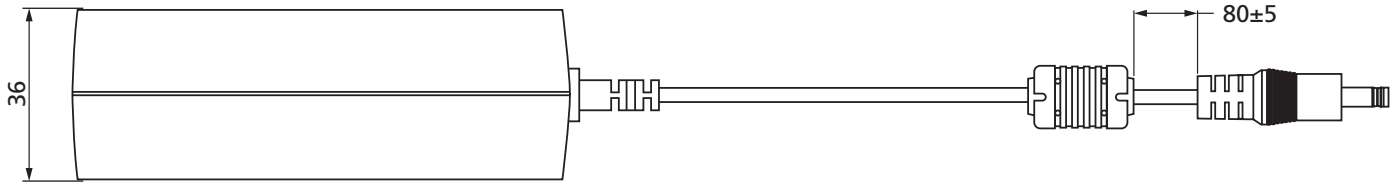
## RPT Series Power Adapters

### MECHANICAL SPECIFICATIONS

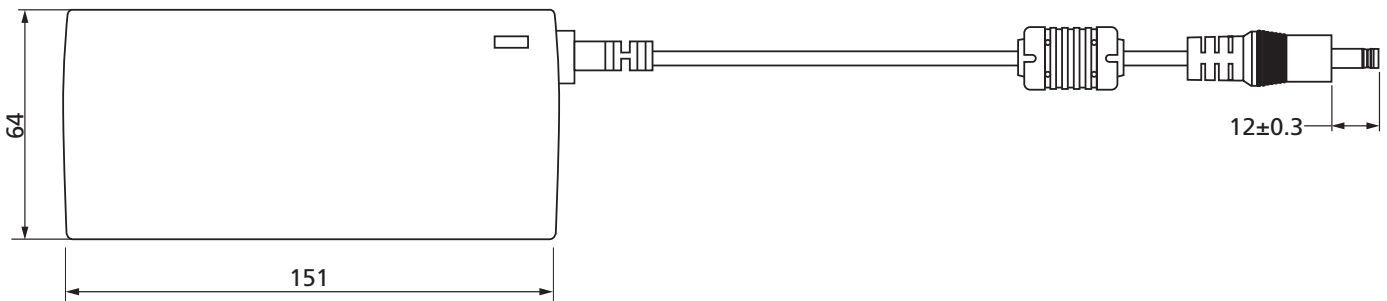
MODEL	RPT90-19-P5-A3
Dimensions	151 x 64 x 36mm (LxWxH)
Weight	460g
Input Socket	IEC 60320 C14
Output Plug	2.1 x 5.5mm Plug, Centre Positive



Side-View



Top-View



Bottom-View

